



Healthy Rivers
PLAN FOR CHANGE

Wai Ora
HE RAUTAKI WHAKAPAIPAI



RAUKAWA CHARITABLE TRUST
TE POARI MANAAKI O RAUKAWA



TŪWHARETOA MĀORI TRUST BOARD



Lake Taupo Catchment Case Study

- Purpose of a case study for the Collaborative Stakeholder Group
- Policy Overview
- Taupo Implementation Overview
- Success factors and Council learnings











Policy outcome

- Maintain high water quality in Lake
- Cap nitrogen discharges
- Nitrogen allocation based on historical discharge
- Consents required for farming and trading allowed
- 20% reduction to account for load to come, \$81 million fund, Lake Taupo Protection Trust

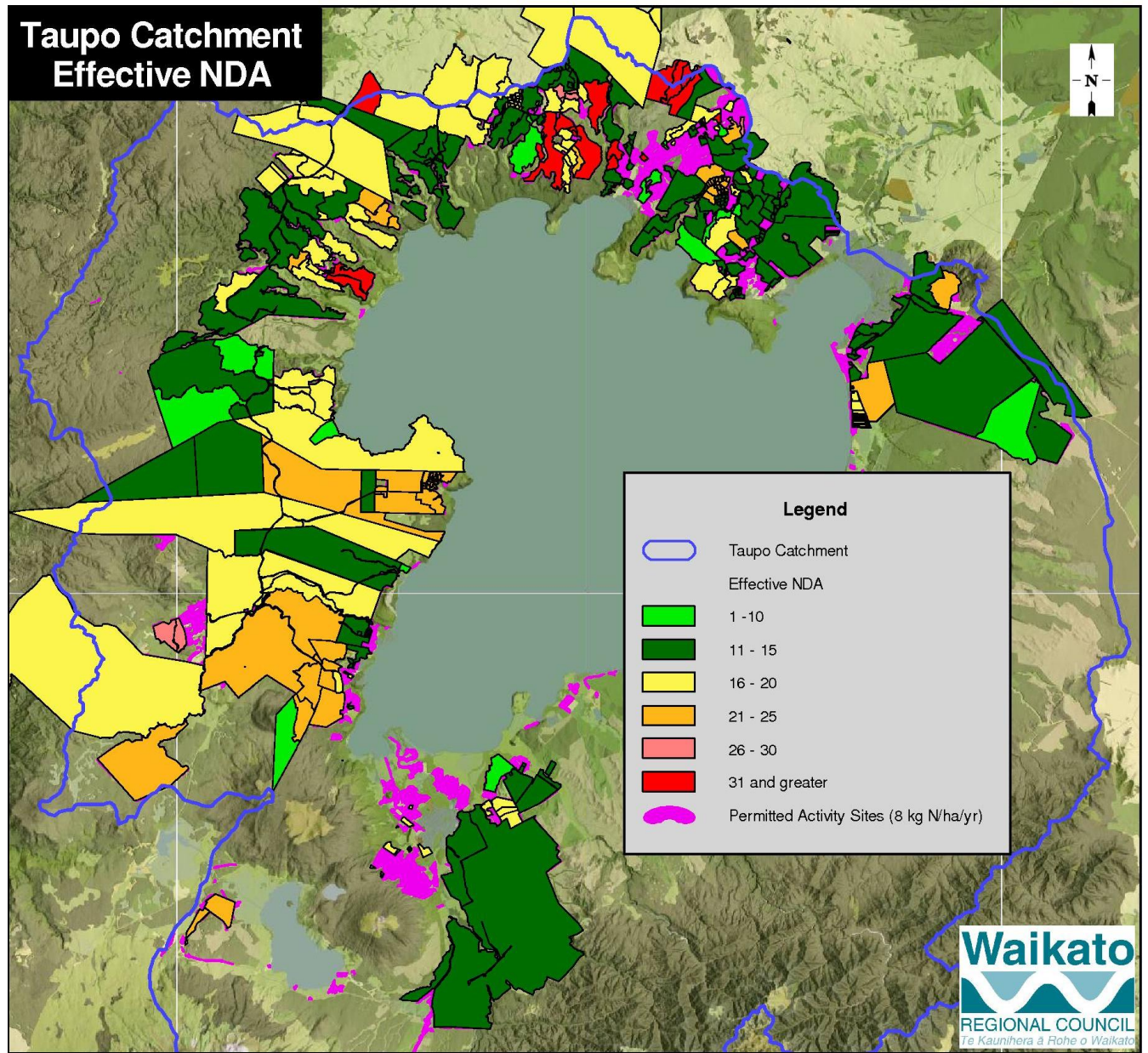
What is expected of farmers

- Resource Consent
 - 'Benchmark'
 - Nitrogen Discharge Allowance (kg/ha) and Total Allowable Nitrogen Discharge (kg/ha/yr)
- Nitrogen management plan
- Verify via farm records (stock, fertiliser, effluent etc)
- Annual audits
- Common expiry date - July 2036

Taupo Implementation - History

- Implementation project est. 2007
 - relationship building & education
 - benchmarking
- 2009 – 2012
 - benchmarking
 - resource consents
- 2013 onwards
 - compliance / auditing
 - Some consent processes

Approx 80
farming
consents



Healthy environment

Strong economy

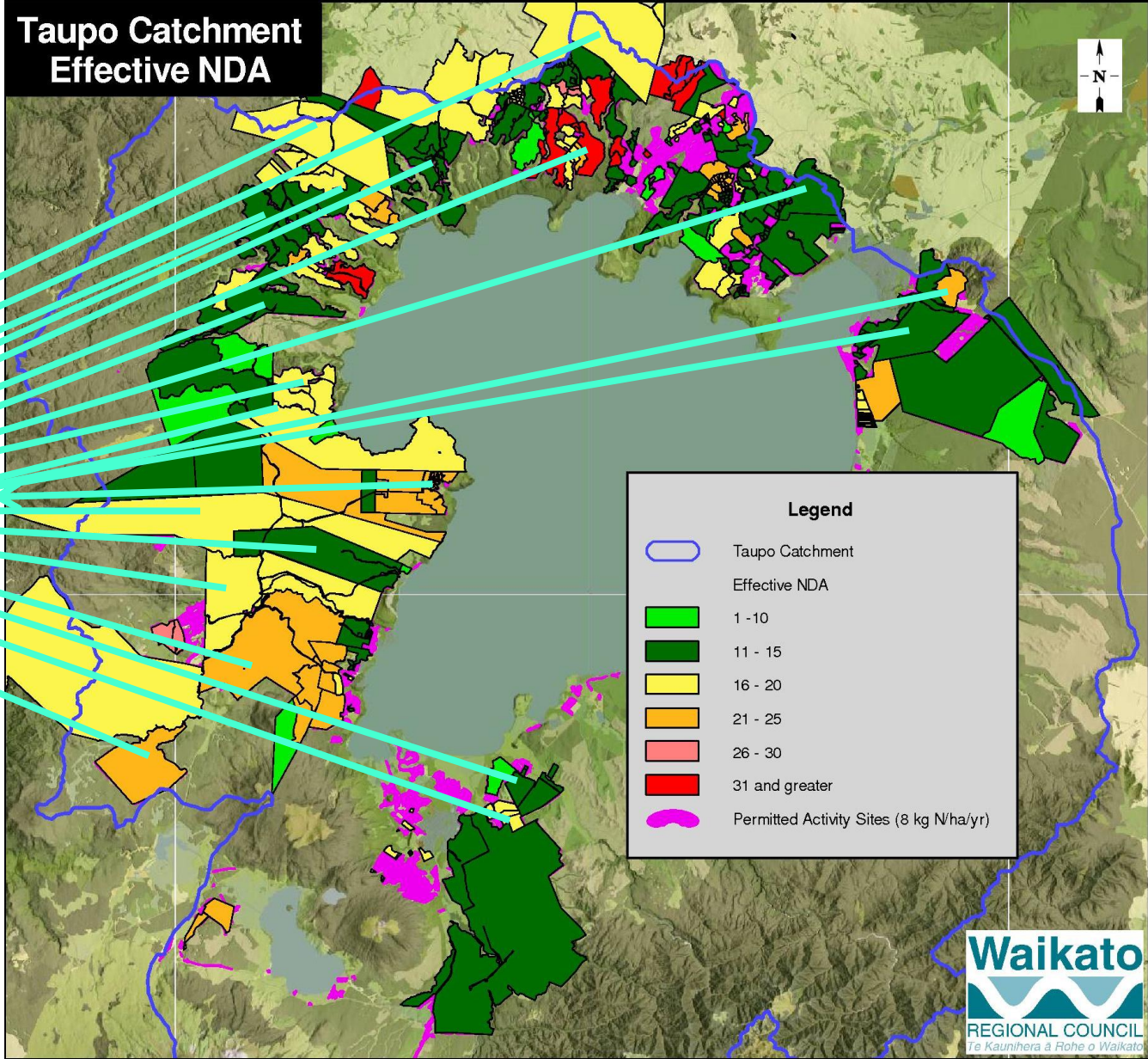
Vibrant communities

Nitrogen Trading

To the Lake
Taupo Protection
Trust

151,000 kg N

Taupo Catchment
Effective NDA



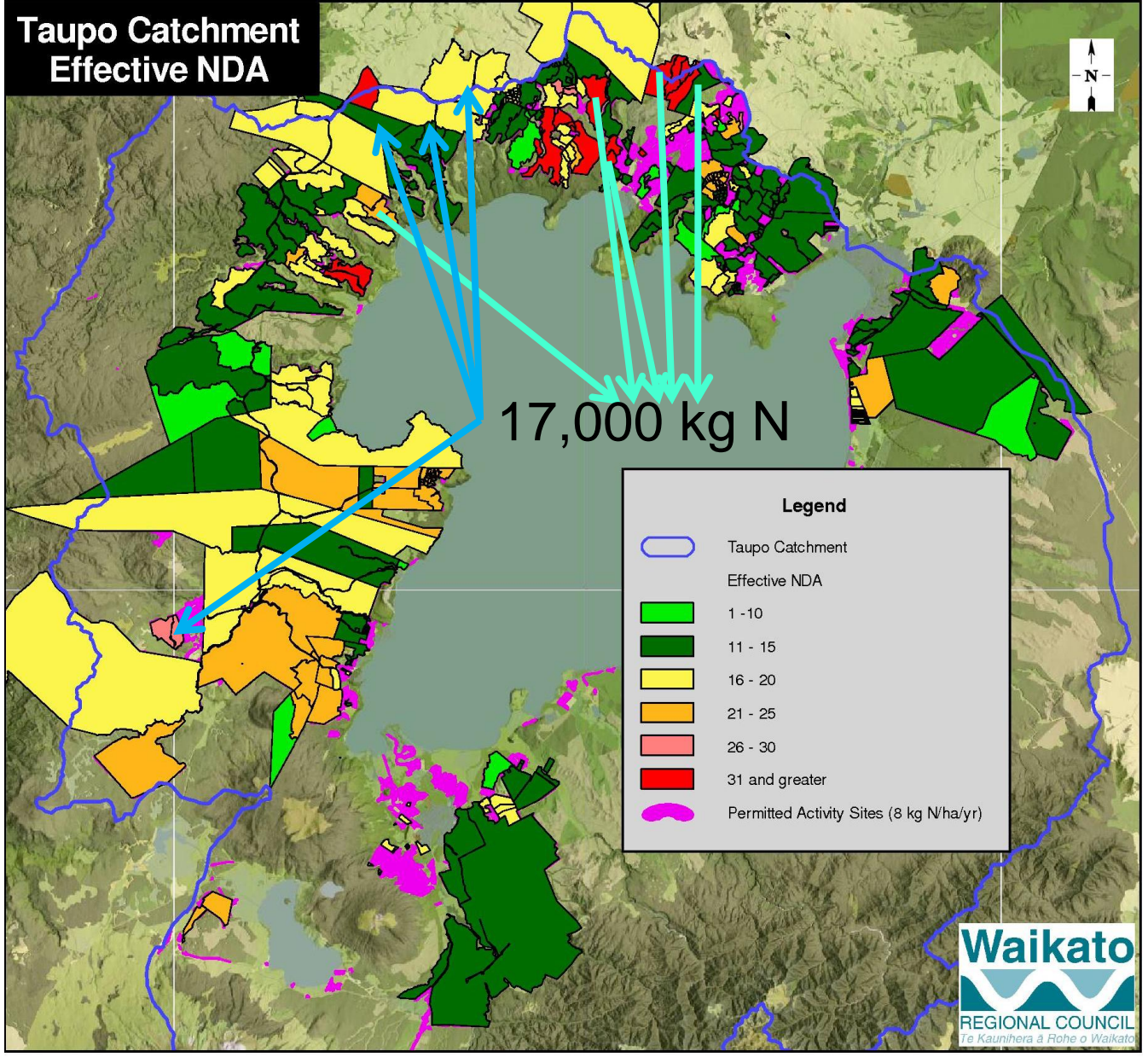
Healthy environment
Strong economy
Vibrant communities



Nitrogen Trading

Landowner to
landowner

17,000 kg N



Healthy environment
Strong economy
Vibrant communities



Outcomes

Total new forestry
5,800 ha

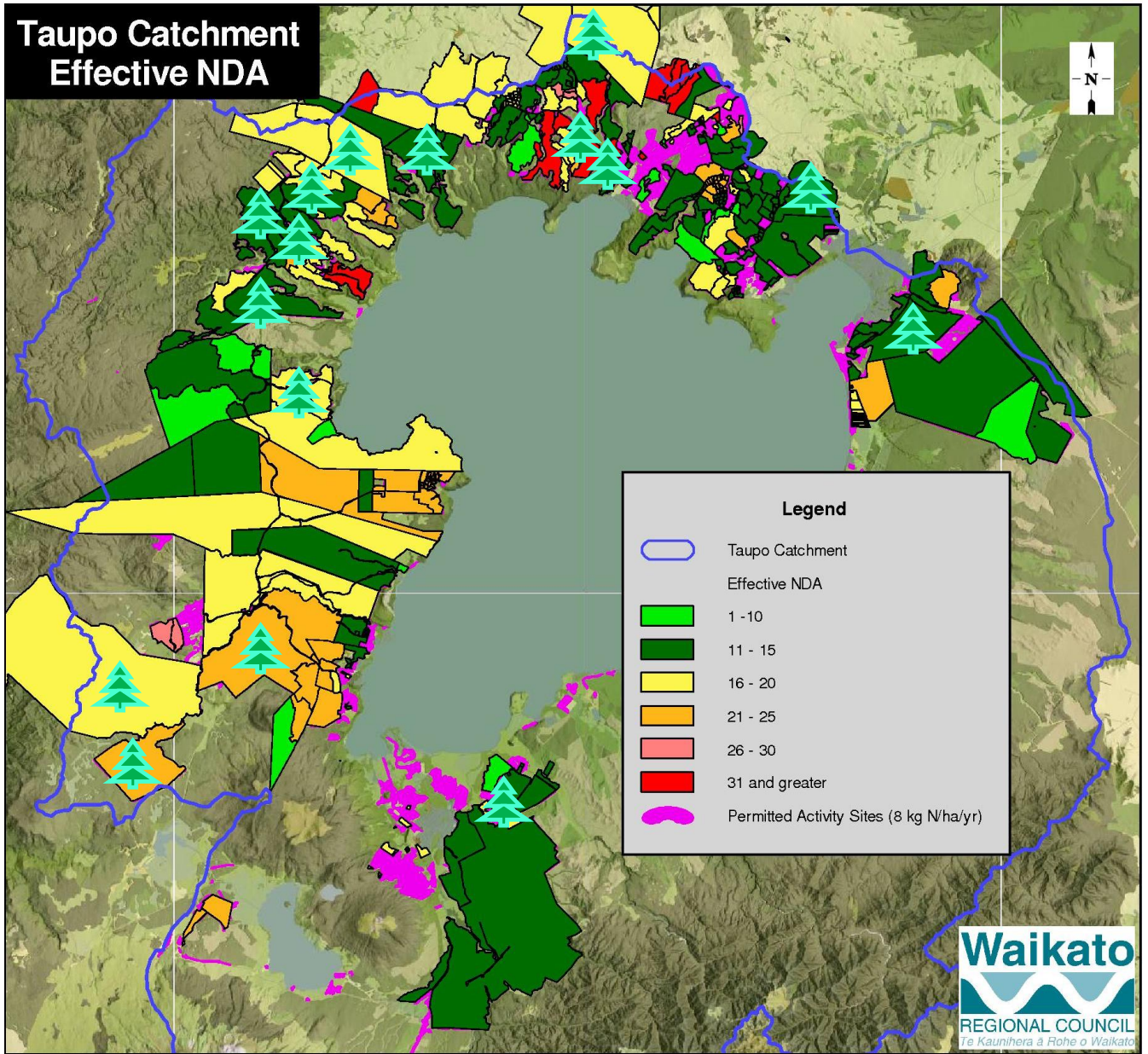
Dairy to forestry
163 ha

S & B to forestry
5,637 ha

S & B to Dairy
680 ha

On-farm
efficiencies

Taupo Beef



Healthy environment

Strong economy

Vibrant communities



Successes

- Political and farmer willingness to engage
- Positive relationships with farmers
- 3rd party experts assisted communication
- Financial assistance assisted uptake for farmers
- Farm management flexibility increased via trading
- Reduction target has been met

Council Learnings

- Those impacted by policy help design it
- New way of farming – shift in thinking and organising information
- Council had to develop new processes, skills

Council Learnings

- Implementation plan 'evolved'
- Required ongoing input from policy developers, enforcement experts
- High resource demands in the early phase
- Compliance management through education & close engagement, non-compliance un-tested in District Courts